



- RK outlet fitting that protrudes from the wall
- With flush-mounting and accessible Sandwich box
- Connections with sheath that is gas-tight with respect to the wall and provide ventilation to the outside
- TECO Tapered Seal connection: heat resistant in the event of fire (HTB)
- The compact faceplates allow access to the shut-off valves
- The faceplate Design is suitable for exposed installation



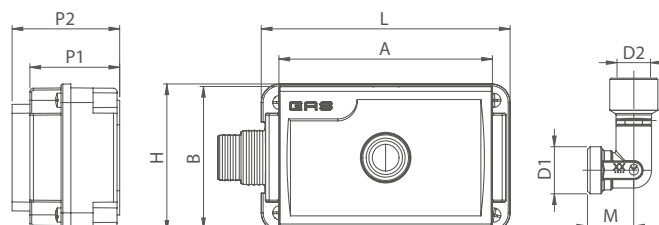
Material		
Body	Sandwich Box	faceplate
Brass CW617	ABS	White ABS

TECHNICAL SPECIFICATIONS

Connections	Working pressure	Temperature	High temperature resistance	Standard and certification
TAPERED SEAL and ISO 228 M thread ISO-228 Female Thread	MOP 5	- 20 °C + 60 °C	(B01) 0,1 bar 650°C for 30min	DIN EN 331 DVGW

VERSIONS AND CODES

Flush-mounting gas box with outlet fitting*

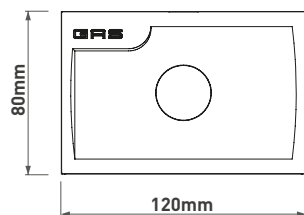
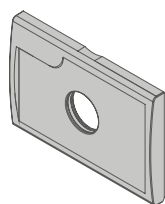


Code	DN	D1	D2	M	L	H	P1	P2	A	B	Pack
RK13KC0100	15	TC3/4"	G 1/2"	26	140	83	51	61	120	80	10

* Includes: fixing bracket, site protection cover and white faceplate. Does not include: fittings.

SPARE PARTS

RK white faceplate

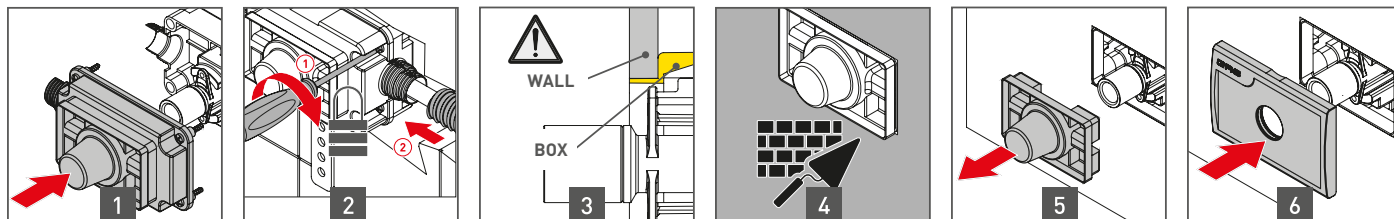


Code	Finish	Pack
RKPL0001	White	1

OPERATION AND TECHNOLOGIES

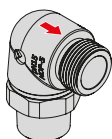
INSTALLATION

Box closing and assembly of the closing covering plate.

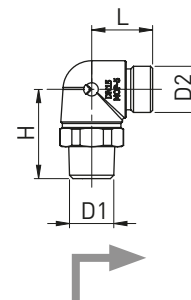


ACCESSORIES

90° fitting



HTB 925°C for 60' (GT5 DIN 3586)



Code	DN	FIREBAG [®] TAE	D1	D2	L	H	SW	Pack
RT406C00	15	•	R1/2"	G1/2"	40	28	27	10

ITEM SPECIFICATIONS

RK: Flush-mounting gas fitting

A 1/2" female elbow fitting with 3/4" tapered seal connection. It comes complete with a readily serviceable sandwich box, which is gas-tight with ventilation to the environment and sealed sheath connections. Brass body. Brackets and protection covers included. Complete with faceplate that allows maintenance work. The connections are certified and guaranteed to seal at high temperature HTB 650°C for 30'.

