

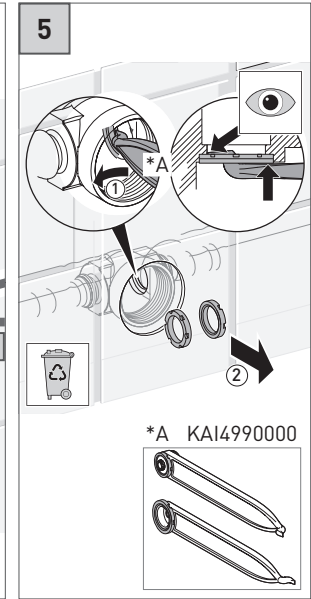
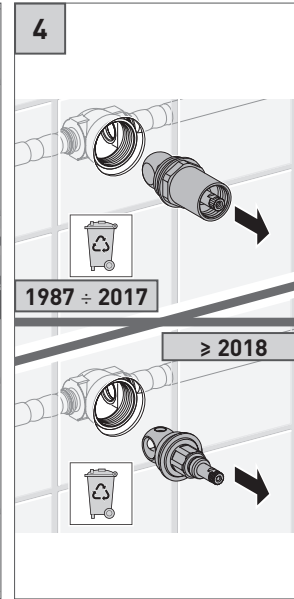
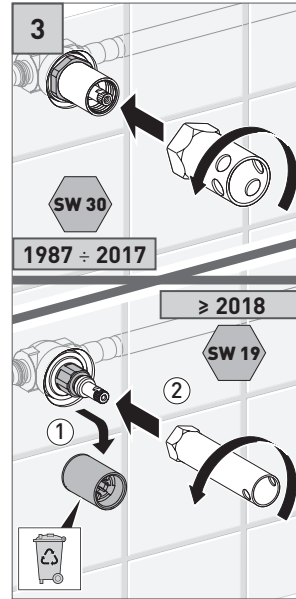
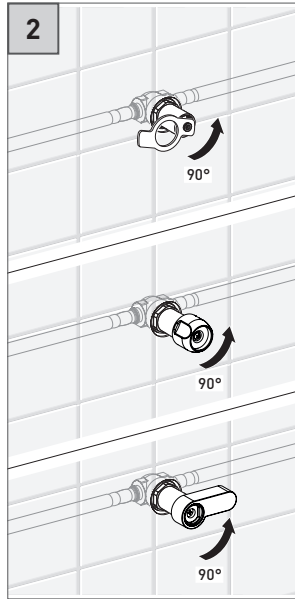
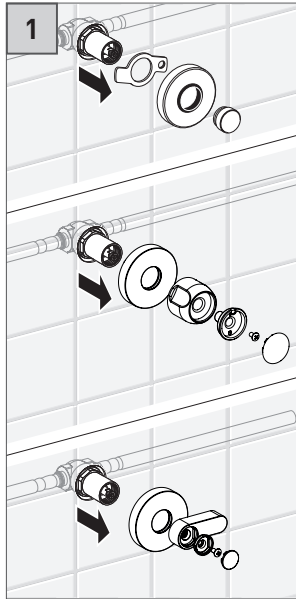
164

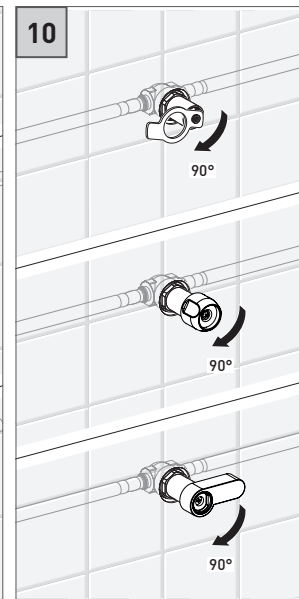
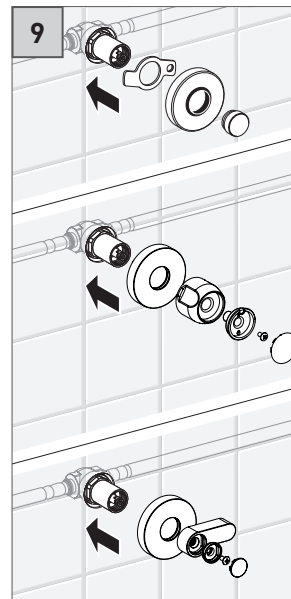
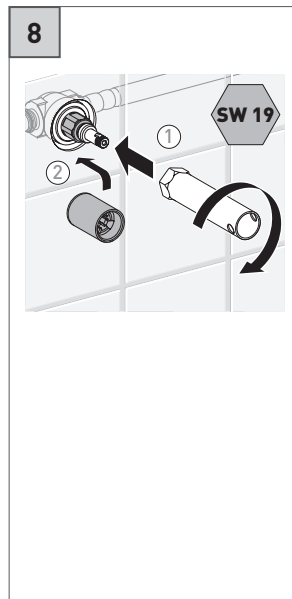
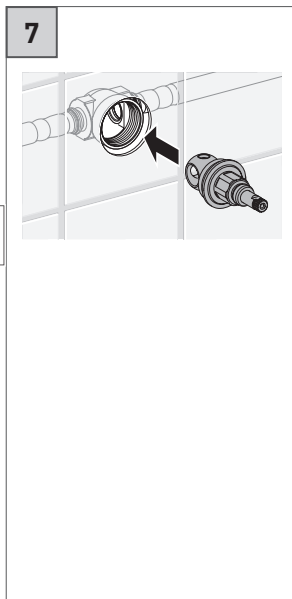
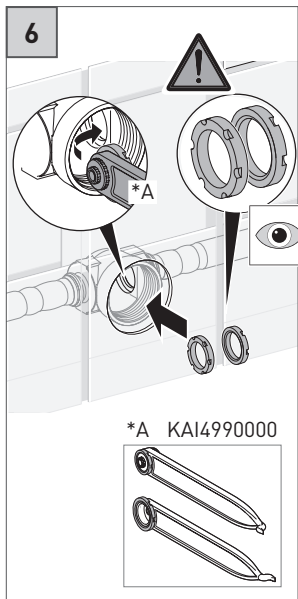
Teco Control

FI00064_R1 ©1218



via Sandro Pertini 39/41 - 25050
 Provaglio d'Iseo BS - ITALY
 t. +39.030.68.50.510
 www.tecosrl.it - info@tecosrl.it





CARATTERISTICHE TECNICHE / TECHNICAL SPECIFICATIONS

pressione di esercizio / working pressure

PN 10

temp. di esercizio / working temperature

0 +95 °C

rif. norme / reference standard

DIN EN 13828

