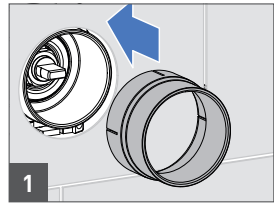
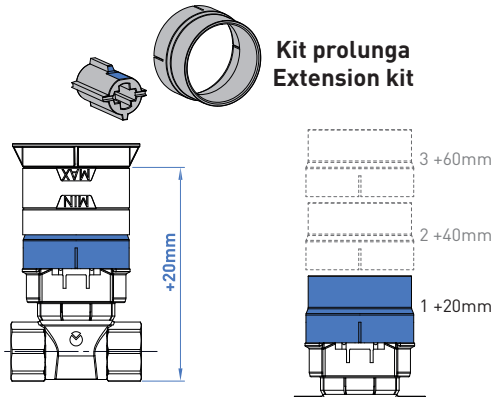
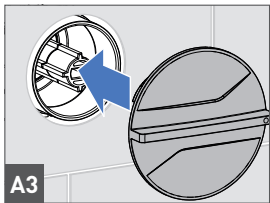
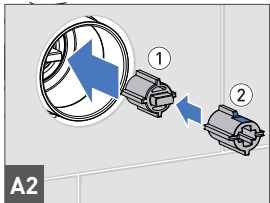
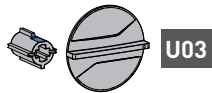


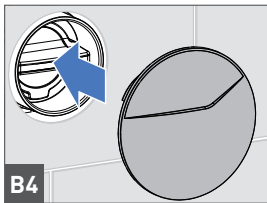
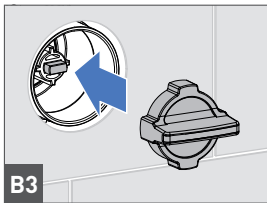
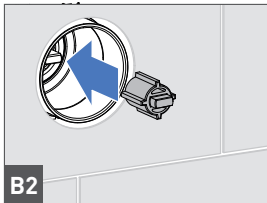
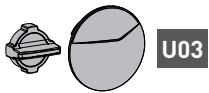
Installazione prolunga
Extension installation



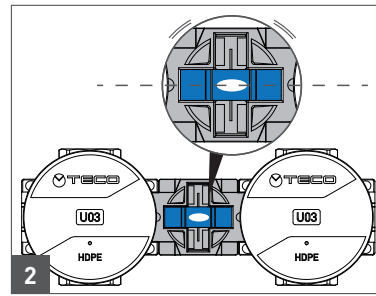
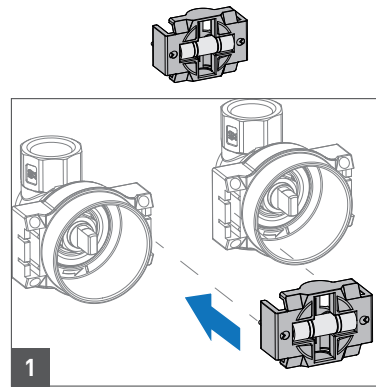
A **Comando esterno**
External control



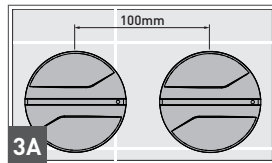
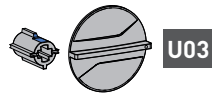
B **Comando interno**
Internal control



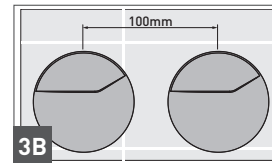
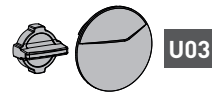
Kit duplex installazione
Duplex kit installation



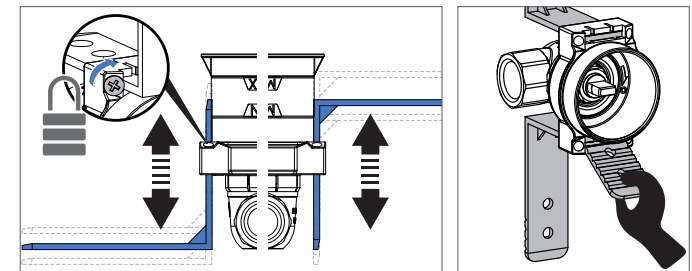
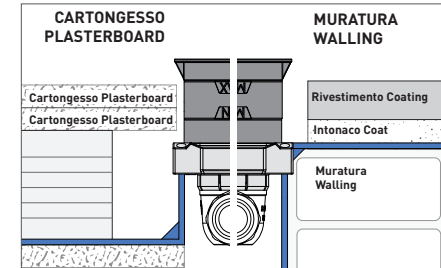
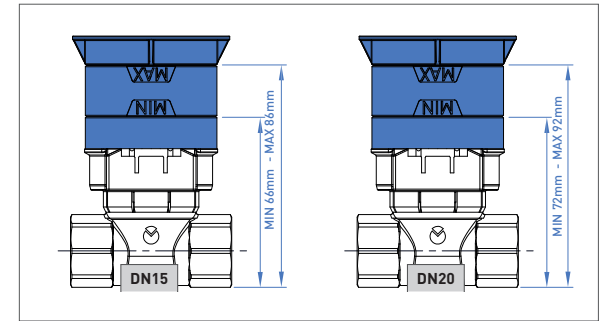
A **Comando esterno**
External control



B **Comando interno**
Internal control



INSTALLAZIONE: Regolazione staffe
INSTALLATION: Adjustable fixing brackets

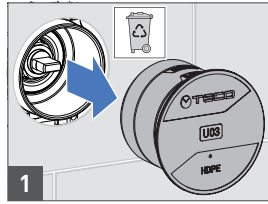


CARATTERISTICHE TECNICHE / TECHNICAL SPECIFICATIONS

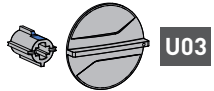
pressione di esercizio / working pressure **PN 10**
temp. di esercizio / working temperature **+90°C max.**
rif. norme / reference standard **DIN EN 13828**



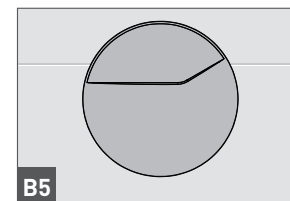
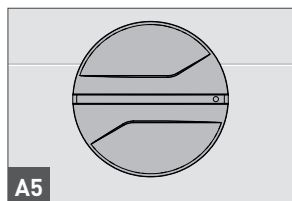
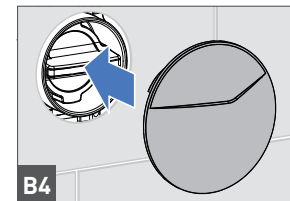
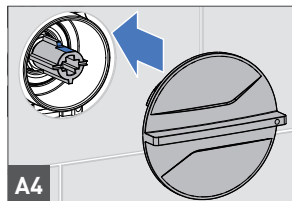
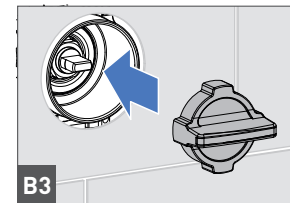
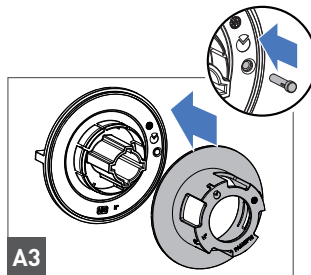
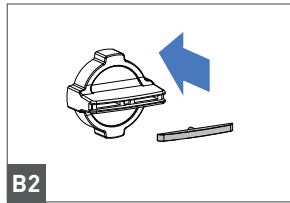
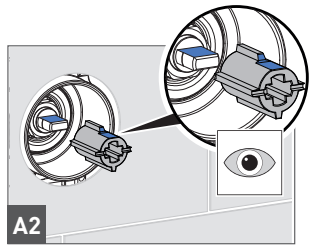
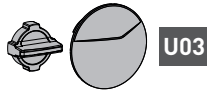
Installazione accessori
Installation of accessories



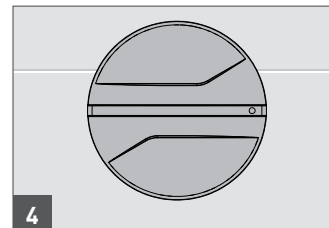
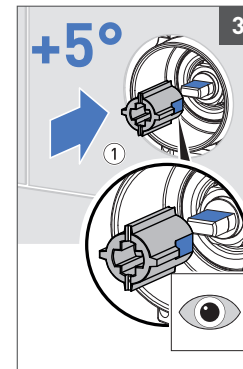
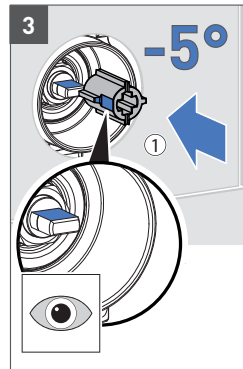
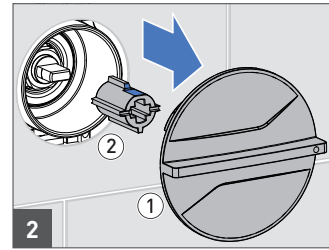
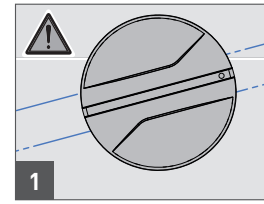
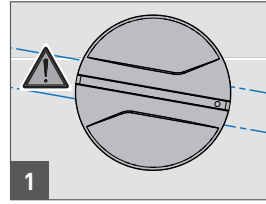
A Comando esterno
External control



B Comando interno
Internal control



Regolazione maniglia comando esterna
External control adjustment



Manutenzione kit Teco DN15 - DN20
Teco Control Maintenance DN15 - DN20

