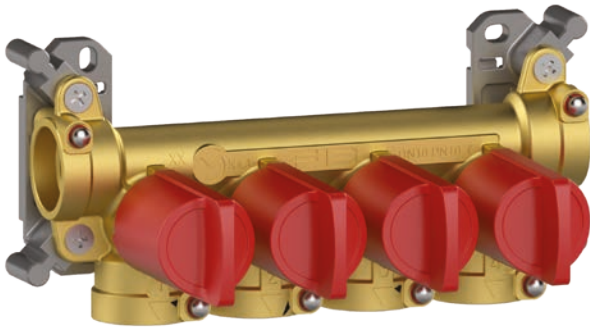


CK.3

FASTEC® MULTIPLE SHUT-OFF VALVE MANIFOLD



- CK.3 compact distribution manifold
- Individual outlet shut-off valves mean there is no need for valves under the basin
- Modular mounting brackets with quick wall fastening
- The FASTEC® connection is convenient and safe to work with, and does not require maintenance
- TOP-ENTRY® removable shut-off valve with Soft Turn® anti-jamming ball
- FASTEC® connection kit provides modularity



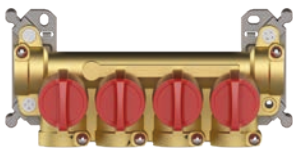
Material				
Body	Mount	Balls	Seats	Handle
Brass CW617	Nylon PA6	Engineered Polymer	Silikon	Polyamide

TECHNICAL SPECIFICATIONS

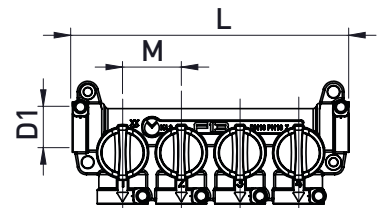
Connections	Working pressure	Temperature	Standard and certification
FASTEC®	PN10 (10 bar)	0°C + 95 °C	DIN EN 13828 (KTW-W270) DVGW W570-1

VERSIONS AND CODES

Multiple shut-off manifold for domestic water systems



Multiple shut-off manifold for domestic water systems



	Code	DN	Outlets	D1	M	L	Pack
F	CK034F10100	10	4	F13	32	151	5
F	CK035F10100	10	5	F13	32	183	5



FASTEC® is the quick connection system approved according to DVGW W534, which is specific for sanitary installations DIN EN 13828.



QUICK CONNECTION

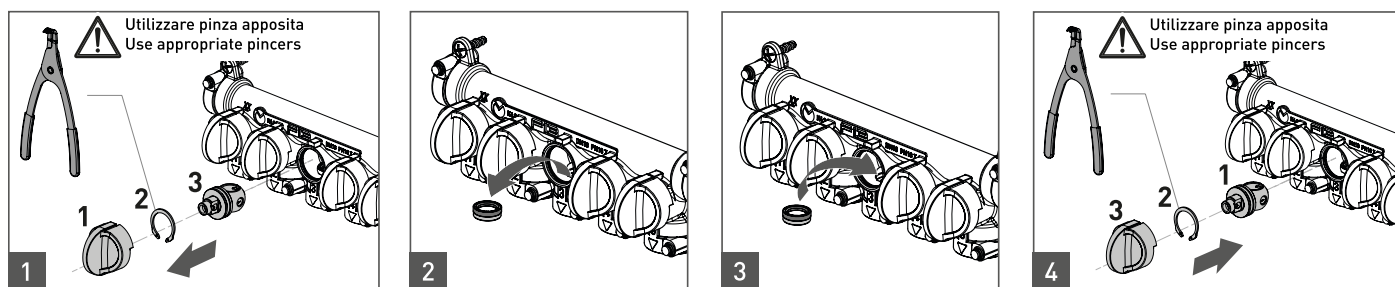
1

2

3

FUNCTION AND INTEGRATED TECHNOLOGIES

TECO-CONTROL

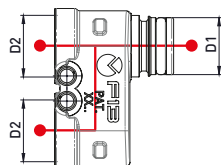


FASTEC® ACCESSORIES

TWIN 1 fitting



TWIN fitting
FASTEC® connection



	Code	D1	D2	Pack
F	KA00F10001	F13M	2xF13F	10

Connection fittings

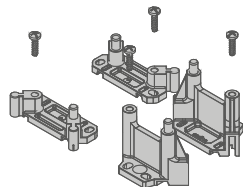


Fitting for connecting
CK.3 manifolds

	Code	D1	Pack
F	KA00K00008	F13M	10

ACCESSORIES

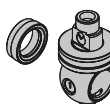
Fixing bracket kit



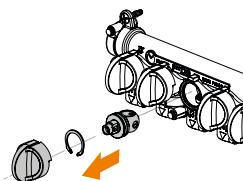
	Code	DN	Pack
	KA00K40006	250x160x20 mm	5

SPARE PARTS

DN10.1 kit teco control

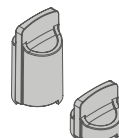


Spare part KIT
TECO-CONTROL



	Code	DN	Pack
	KR00K00002	10	10

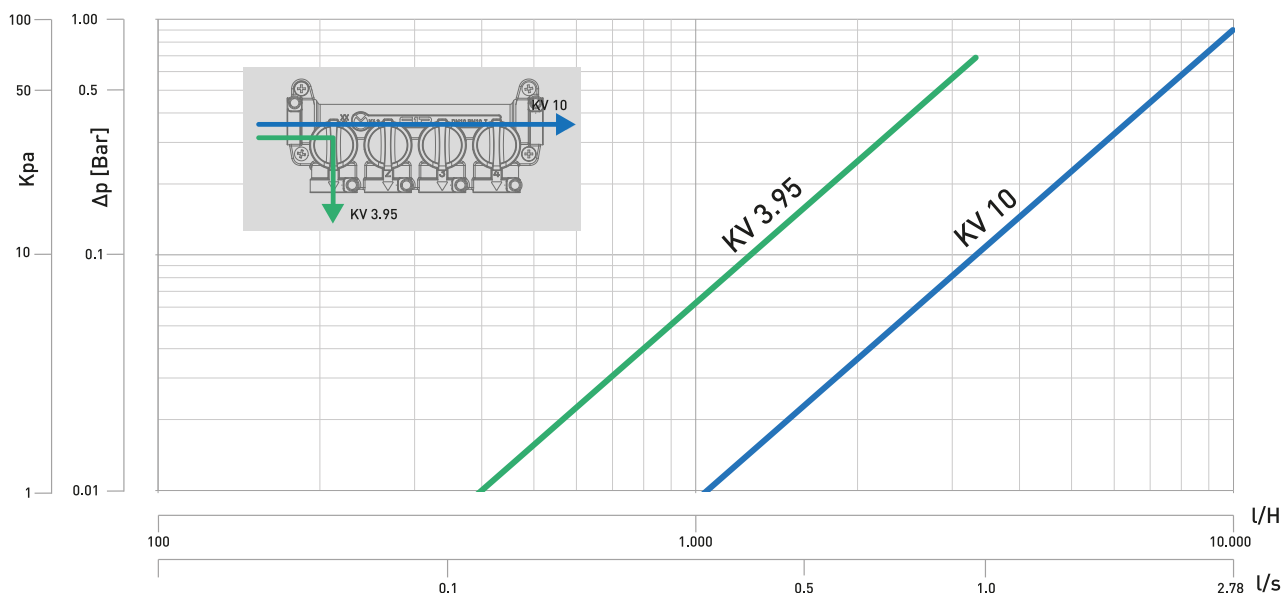
Handle kit



Control handle KIT

	Code	Colour	Pack
	KA00K40004	BLUE / RED	1

PRESSURE DROP DIAGRAM



ITEM SPECIFICATIONS

CK.3: Multiple Shut-off Manifold with 6+5 outlets

A compact distribution manifold kit with brass body and Top Entry® removable shut-off valves on each outlet in accordance with the DIN EN 13828 standard, with “soft turn” seals and PPSU full-flow balls. Quick coupling fittings with FASTEC® technology and locking pin. Modular mounting brackets with quick wall fastening.

Temperature: 0°C + 95 °C.

Working pressure: 10 bar.

