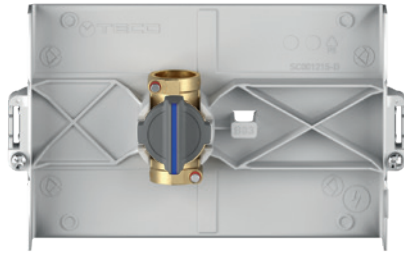
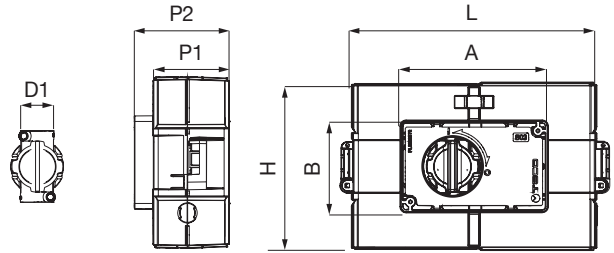




FLUSH-MOUNTING VALVE WITH OPTIONAL REMOTE CONTROL



B03 Compatible faceplate



	Code	DN	D1	L	H	P1	P2	A	B	Faceplate	Pack
F	K401BF10300	15	F13	198.5	136	60	75	118	74	B03	5
F	K401BF30200	20	F14	198.5	136	60	80	118	74	B03	5

Includes: pre-assembled box, fixing brackets, site protection cover, spirit level
DOES NOT include: faceplate, fittings, motor and cable

Material		
Body	Box	Top-Entry ball
CW617N Brass	PS	Engineered polymer

Technical Specifications			
Connections	Working pressure	Temperature	Standard and certification
FASTEC®	PN10 (10 bar)	0 °C + 95 °C	DIN EN 13828 - (KTW-W270) - DVGW W 570-1

FEATURES

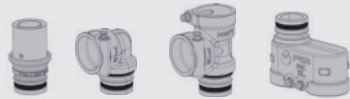
- Removable ball valve with brass body and Top Entry® system, complies with DIN EN 13828 standard with light "Soft Turn®" control, complete with easily accessible box.
- Closing and opening by operating the handle or via the optional **E104** motor.
- Manually openable faceplate with magnetic closure, available in four finishes.

APPLICATIONS

- Domestic water systems
- Heating

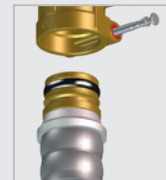
OPERATION AND TECHNOLOGIES

F FASTEC STORE The shut-off devices
USE FASTEC® STORE FITTINGS



GO TO THE ENTIRE
FASTEC® RANGE

CONNECTION:



FASTEC

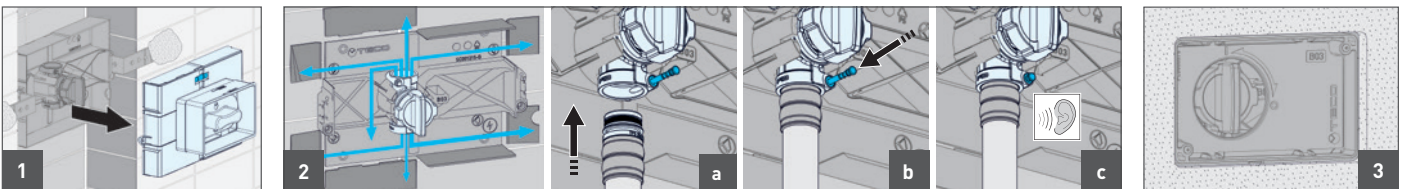
F13 - DN15

Fitting range: 16, 20, 25, 26 mm = 1/2"

F14 - DN20

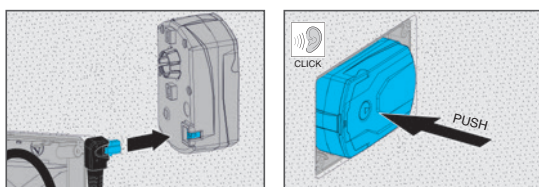
Fitting range: 25, 26, 32 mm = 3/4"

VALVE INSTALLATION



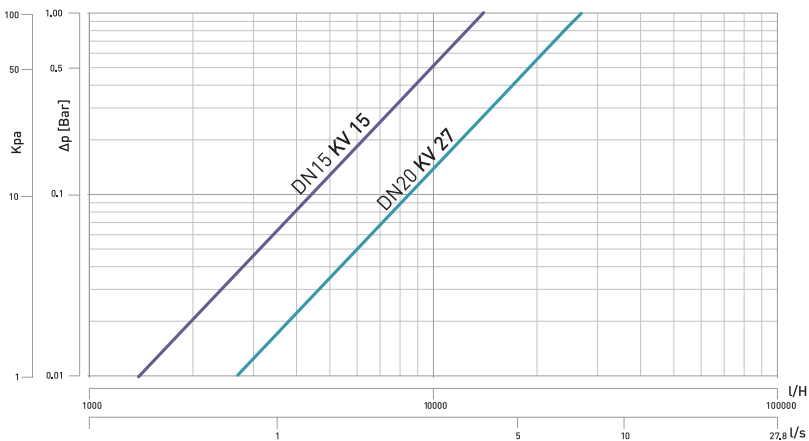
CAUTION: when installing the valve, insert the corrugated pipe in the box to make the valve compatible with the optional remote control.

MOTOR INSTALLATION



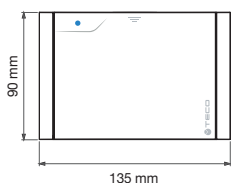
GO TO THE
E100 SERIES

FLOW LOSS DIAGRAM



FACEPLATES

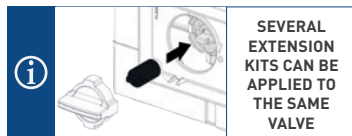
B03



Code		Finish	Pack
KPLB0301600		White	10
KPLB0301M00		Polished chrome	5
KPLB0301800		Silver	5
KPLB0301A00		Black	5

ACCESSORIES

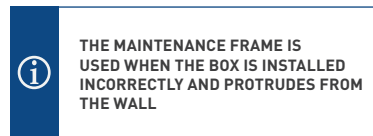
Modular extension kit



E4 modular handle extension kit
·23mm· modular + screws + faceplate extensions

Code	Pack
KA00K00015	1

Maintenance frame*

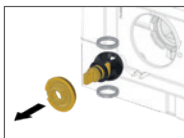


Code	Size	Pack
KRPL0004	150x105x15 mm	1

*Only compatible with D15

SPARE PARTS

E4 TECO-CONTROL spare parts kit



Code	DN	Pack
KRTCE415000	15	1
KRTCE420000	20	1

E4 handle kit



Code	Pack
KA00K40011	1

SPECIFICATION TEXT

K4.1 E-READY: Flush-mounting shut-off valve with optional motor

Top Entry shut-off valve with Top Entry removable ball and full flow that complies with the DIN 13828 standard, pre-assembled in a easily accessible sandwich box with knock-out parts. Engineered polymer ball and "Soft Turn" anti-jamming seals. Brackets and protection covers included. Closing and opening by operating the handle. Operating pin compatible with mounting the ON-OFF electric motor with auxiliary microswitch in the version with open signal or in the version with safety feedback when the valve is closed.