

KM3

INSTALLATION KIT FOR DUAL-PIPE GAS METER

Data sheet
MCTW004.00 - 05/2019



- The shut-off kit for KM3 dual-pipe gas meters consists of a meter bracket with various combinations of meter fittings and/or ball shut-off valves.
- The valves are EN331 DVGW certified and are available with GST® and FIREBAG® safety devices.
- The lever has a slot for padlocking.
- Unipress® press-fit versions of the fittings and valves are also available.



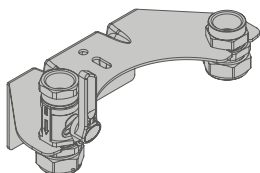
Material							
Body	Fittings	Finish	Balls	Seats	Lever	Meter bracket	Safety devices
Brass CW617	Brass CW617	Sand blasted brass	Brass	PTFE	Aluminium yellow painted	Zink plated Steel	FIREBAG GST
	Crimp fittings CW602						

TECHNICAL SPECIFICATIONS

	Reference standards	Working pressure	Working temperature	High temperature resistance	Application
KM3	DIN EN 331 DVGW G 5614 (version UNIPRESS®)	MOP 5 (5 bar)	-20 °C +60 °C	HTB 650°C for 30' (DIN EN331 B1)	For all types of gas as specified in EN 437 and DVGW G260/1 (Methane, Butane, Propane)
KM3T FIREBAG®	DIN EN 331 - DIN 3586 DVGW G 5614 (version UNIPRESS®)	MOP 5 (5 bar)		HTB 650°C for 30' (DIN EN331 C5)	
KM3G GST®	DIN EN 331 - DVGW VP305-1 DVGW G 5614 (version UNIPRESS®)	15 - 100 mbar		HTB 650°C for 30' (DIN EN331 B1)	

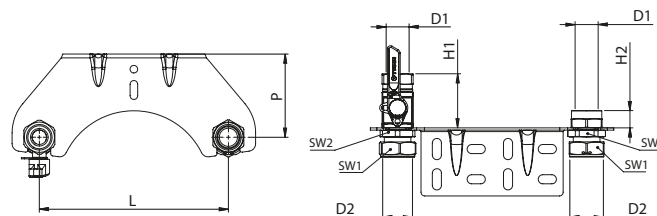
VERSIONS AND CODES

Valve + Fitting KIT – threaded version



Fixing bracket
Padlockable lever

- HTB 650° for 30' (DIN EN331 B1)
- HTB 650° for 30' (DIN EN331 C5) - TAE



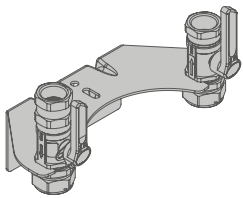
Code	DN	FIREBAG® TAE	GST® GS m³/h	D1 EN 10226-1	D2 ISO 228-1	L	P	H1	H2	SW1	SW2	Pack
KM3VF1RC100	25			Rp1"	G1"1/4	250	110	71	23	46	46	1
KM3VT1RC100	25	•		Rp1"	G1"1/4	250	110	95	23	46	46	1
KM3VG1RC100	25		V _{GAS} =2.5	Rp1"	G1"1/4	250	110	95	23	46	46	1
KM3VG2RC100	25		V _{GAS} =4.0	Rp1"	G1"1/4	250	110	95	23	46	46	1
KM3VG3RC100	25		V _{GAS} =6.0	Rp1"	G1"1/4	250	110	95	23	46	46	1

TECO Srl
Via Sandro Pertini, 39/41 - Zona industriale Noccole, 25050 Provaglio d'Iseo (BS)

+39 030 6850510 | +39 030 6850555
info@tecosrl.it | www.tecosrl.it

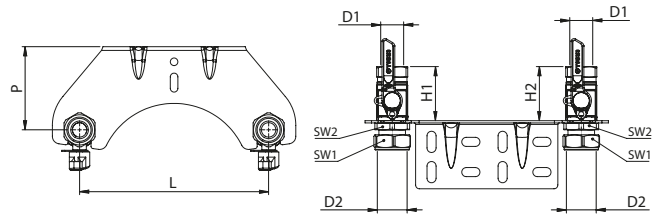


KIT with 2 valves – threaded version



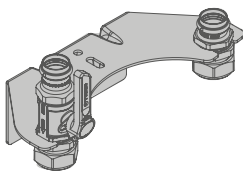
Fixing bracket
Padlockable lever

- HTB 650° for 30' (DIN EN331 B1)
- HTB 650° for 30' (DIN EN331 C5) - TAE



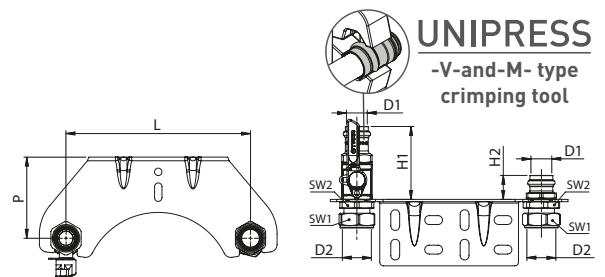
Code	DN	FIREBAG TAE	GST® GS m³/h	D1 EN 10226-1	D2 ISO 228-1	L	P	H1	H2	SW1	SW2	Pack
KM3VF1VF200	25			Rp1"	G1"1/4	250	110	71	71,5	46	46	1
KM3VT1VF200	25	•		Rp1"	G1"1/4	250	110	95	71,5	46	46	1
KM3VG1VF200	25		V _{GAS} =2.5	Rp1"	G1"1/4	250	110	95	71,5	46	46	1
KM3VG2VF200	25		V _{GAS} =4.0	Rp1"	G1"1/4	250	110	95	71,5	46	46	1
KM3VG3VF200	25		V _{GAS} =6.0	Rp1"	G1"1/4	250	110	95	71,5	46	46	1

Valve + Fitting KIT – crimp version



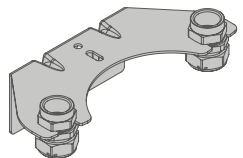
Fixing bracket
Padlockable lever

- HTB 650° for 30' (DIN EN331 B1)
- HTB 650° for 30' (DIN EN331 C5) - TAE

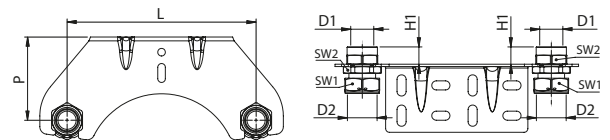


Code	DN	FIREBAG TAE	GST® GS m³/h	D1 DVGW G5614	D2 EN 10226-1	L	P	H1	H2	SW1	SW2	Pack
KM3PP1RP100	25			Ø28	G1"1/4	250	110	99	32	46	46	1
KM3PT1RP100	25	•		Ø28	G1"1/4	250	110	95	32	46	46	1
KM3PG1RP100	25		V _{GAS} =2.5	Ø28	G1"1/4	250	110	99	32	46	46	1
KM3PG2RP100	25		V _{GAS} =4.0	Ø28	G1"1/4	250	110	99	32	46	46	1
KM3PG3RP100	25		V _{GAS} =6.0	Ø28	G1"1/4	250	110	99	32	46	46	1

KIT with 2 fittings – threaded version



Fixing bracket



Code	DN	D1 EN 10226-1	D2 ISO 228-1	L	P	H1	SW1	SW2	Pack
KM3RC1RC100	25	Rp1"	G1"1/4	250	110	23	46	46	1

OPERATION AND TECHNOLOGIES



PADLOCKABLE LEVER

All of the valves can be padlocked in the closed position.



Built-in sealable swivel nuts for a fast and secure gas meter connection.

TECO Srl

Via Sandro Pertini, 39/41 - Zona industriale Noccole, 25050 Provaglio d'Iseo (BS)

+39 030 6850510 | +39 030 6850555
info@tecosrl.it | www.tecosrl.it

TECO[®]
INNOVATING SAFETY



Open

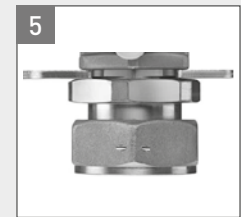
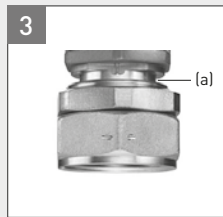


Closed

CLOSING THE VALVE

When the lever is in the "CLOSED" position, it can be locked with a device (e.g. a padlock) to protect the system against involuntary opening of the valve.

APPLICATION CALIBRATED COUPLING GUIDE

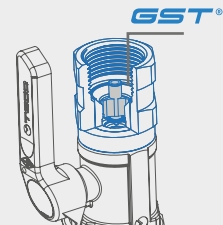


- 1 Installation bracket with connection for fitting and ball valve.
- 2 Insert the fitting and the ball valve (3) with calibrated guide (a) and lock the spanner in the anti-rotation block (4).
- 5 Secure with the lock nut.

GST®

The valves are available with the GST excess flow safety device built into the steel inlet fitting. The valve sizes remain unchanged.

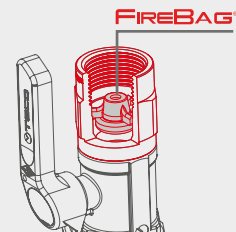
The GST excess flow safety device is built in accordance with the DVGW VP 305-1 standard and is built into the valves/fittings; it has a flow rate V_{gas} 2.5 - 4.0 - 6.0 m³/h at a maximum pressure of 100 mbar.



FIREBAG® - TAE

KM3 valves are available with the FIREBAG thermal safety device built into the steel inlet fitting. The valve sizes remain unchanged.

FIREBAG complies with the requirements of the DIN 3586 standard and is built into the valves/fittings. The thermal device activates at a temperature of 100°C - 5K and can withstand temperatures of up to 650°C for 30 minutes at a pressure of 5 bar.

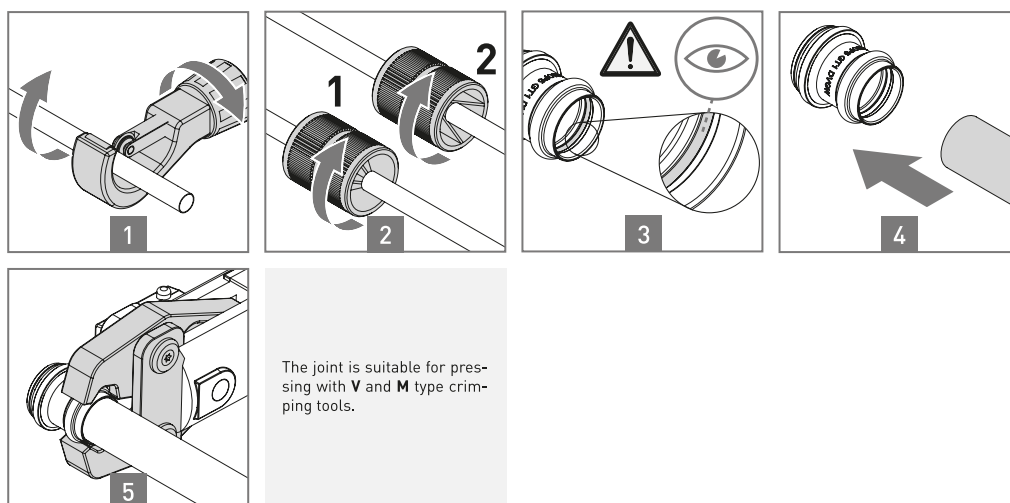


KM3 valves are supplied with a single safety device.



PRESSFITTING CONNECTION UNIPRESS® RG FOR COPPER PIPES

Pressfitting connection for copper pipe according to **DVGW VP 614** and **UNI 11065**. Copper pipes acc. to **UNI1057 R290-250-220 Ø15x1-Ø18x1- Ø22x1mm - 28x1.5mm**.



ITEM SPECIFICATIONS

KM3: Shut-off kit for dual-pipe gas meter

Shut-off kit for KM3 dual-pipe gas meters with galvanized steel meter bracket and various combinations of meter fittings and/or ball shut-off valves. The valves are EN331 DVGW certified and are available with GST® and FIREBAG® safety devices. The fitting and valve connections are threaded or Unipress® press-fit. The lever has a slot for padlocking.

For all types of gas in accordance with EN 437 and DWG G260/1 (Methane, Propane and Butane).

MOP 5.

Working temperature -20°C + 60°C.

high-temperature resistance HTB 650°C for 30' (EN 1775).

